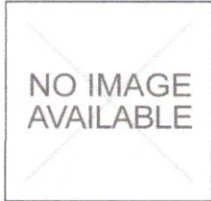
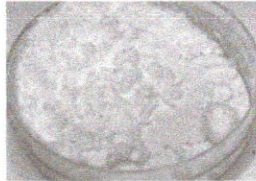


Washington RnD Marijuana Certificate of Analysis

License # 0008 Foreign Matter • Moisture • Water Activity • Microbiological • Mycotoxins • Potency • Terpenes • Residual Solvents



Sample Name: RCB 3.99
Sample ID: 03022017
Received On: 03/02/20
Expires On: Date: 03/02/21
Completed: 03/06/20



5501 NE 109th Ct., Suite N
 Vancouver, WA 98662
 (360) 513-9377 or (360) 947-6767
 www.goatlabs.co
 dani_luce@yahoo.com

Potency Tech: SKW

Sara Whitney 3/6/2020
 Sara Whitney, Lead Analyst

LOQ = Limit of Quantification; The reported result is based on a sample weight with the applicable moisture content for that sample. Unless otherwise stated all quality control samples performed within specifications established by the Laboratory are 0.1%.

Cannabinoid (%)	
HPLC/UV-Vis	
CBD-A	<0.100
CBG-A	<0.100
THC-A	<0.100
CBD	99.983
CBG	<0.100
THC-V	<0.100
CBN	<0.100
Δ9 THC	<0.100
Δ8 THC	<0.100
CBC	<0.100

UNCONVERTED Totals (%)	
"Total" = Total Sum of Unheated Cannabinoids	
"Total" Cannabinoids	99.983

Terpenes (%)	
GC/MS	
α-Pinene	
Myrcene	
β-pinene	
Terpinolene	
Limonene	
Linalool	NA
Caryophyllene	
Humulene	
Caryophyllene Oxide	
α-Bisabolol	
Total Terpenes	

Residual Solvents* (ppm) State Limits		
	GC/MS	WAC 314-55-102
Acetone	ND	5,000
Benzene	ND	2
Butane(s)	ND	5,000
Cyclohexane	ND	3,800
Chloroform	ND	2
DCM**	ND	600
Ethyl Acetate	ND	5,000
Heptane	ND	5,000
Hexane(s)	ND	290
Isopropanol	ND	5,000
Methanol	ND	3,000
Pentane(s)	195.414	5,000
Propane	ND	5,000
Toluene	ND	890
Xylene***	ND	2,170

Converted Totals (%)	
Total THC = THCa * 0.877 + Δ9-THC Total CBD = CBDa * 0.877 + CBD	
Reported Total Δ9THC	<0.100
Reported Total CBD	99.983
Total Cannabinoids	99.983

Mycotoxin Count (ppb)		State Limits
Elisa StatFax 4700		WAC 314-55-102
Aflatoxins	NA	20
Ochratoxins		20

Microbial Count (CFU)		State Limits
3M Petrifilm Plating		WAC 314-55-102
Bile-Tolerant Gram Negative		10000
E. Coli	NA	None
Salmonella		None

*And isomer thereof.
 **Dichloromethane.
 ***Usually 60% m-xylene, 14% p-xylene, 9% o-xylene with 17% ethyl benzene.

Notes

TBD = To Be Determined
NA = Not Applicable
ND = None Detected

This product has been tested by G.O.A.T. Labs, Inc using valid testing methodologies and quality system as required by state law. Values reported relate only to the product tested. G.O.A.T. Labs, Inc makes no claims as to the efficacy, safety, or other risks associated with any detected or non-detected levels of any compounds reported herein. This Certificate shall not be reproduced except in full, without the written approval of G.O.A.T. Labs, Inc.