



Customer:

Customer Sample ID: D8 Chocolates

Laboratory Number: 20I0122-02

Servings per Container: 4.4746



Cannabinoid Profile

Extraction Technician: CB

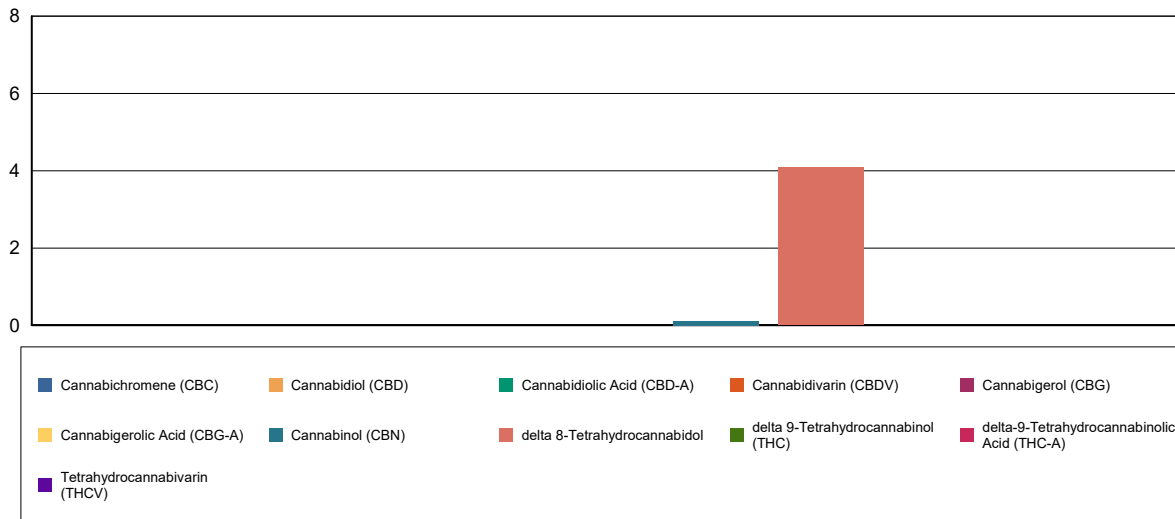
Analytical Chemist: CB

Extraction Date(s)	Analysis Date(s)
9/9/2020	9/9/2020

Cannabinoids (HPLC)		Results		
	LOD (mg/g)	%	mg/g	mg/square
Cannabidiarin (CBDV)	<0.001			
Cannabidiolic Acid (CBD-A)	<0.001			
Cannabigerolic Acid (CBG-A)	<0.001			
Cannabigerol (CBG)	<0.010			
Cannabidiol (CBD)		0.0002	0.00175	0.00785
Tetrahydrocannabivarin (THCV)	<0.001			
Cannabinol (CBN)		0.01	0.114	0.511
delta 9-Tetrahydrocannabinol (THC)	<0.001			
delta 8-Tetrahydrocannabidol		0.41	4.08	18.3
Cannabichromene (CBC)	<0.001			
delta-9-Tetrahydrocannabinolic Acid (THC-A)	<0.001			
Cannabinoids Total		%	mg/g	
Max Active THC		0.00	0.00	
Max Active CBD		0.00	0.00	
T.Active Cannabinoids		0.01	0.12	
Total Cannabinoids		0.42	4.20	

Following USDA guidelines on uncertainty, Altitude Consulting's uncertainty are calculated for CBDA and CBD at +/- 4%. The uncertainty for THCa and THC are +/- 5%. This implies the range for a 10% value of CBD to be 9.6-10.4%. The uncertainty range for a 0.30% value of THC would be 0.28-0.32%.

Cannabinoid (mg/g)



Reporting Limits will vary based on sample extraction weight used for the analysis.

Altitude Consulting, LLC utilizes NIST traceable Reference Standards and Certified Reference Material to calibrate analytical instruments along with proven analytical methods. The methods are applied in the most ethical manner following good laboratory practice guidelines. The results of this report are based solely on the sample submitted and cannot be reproduced.